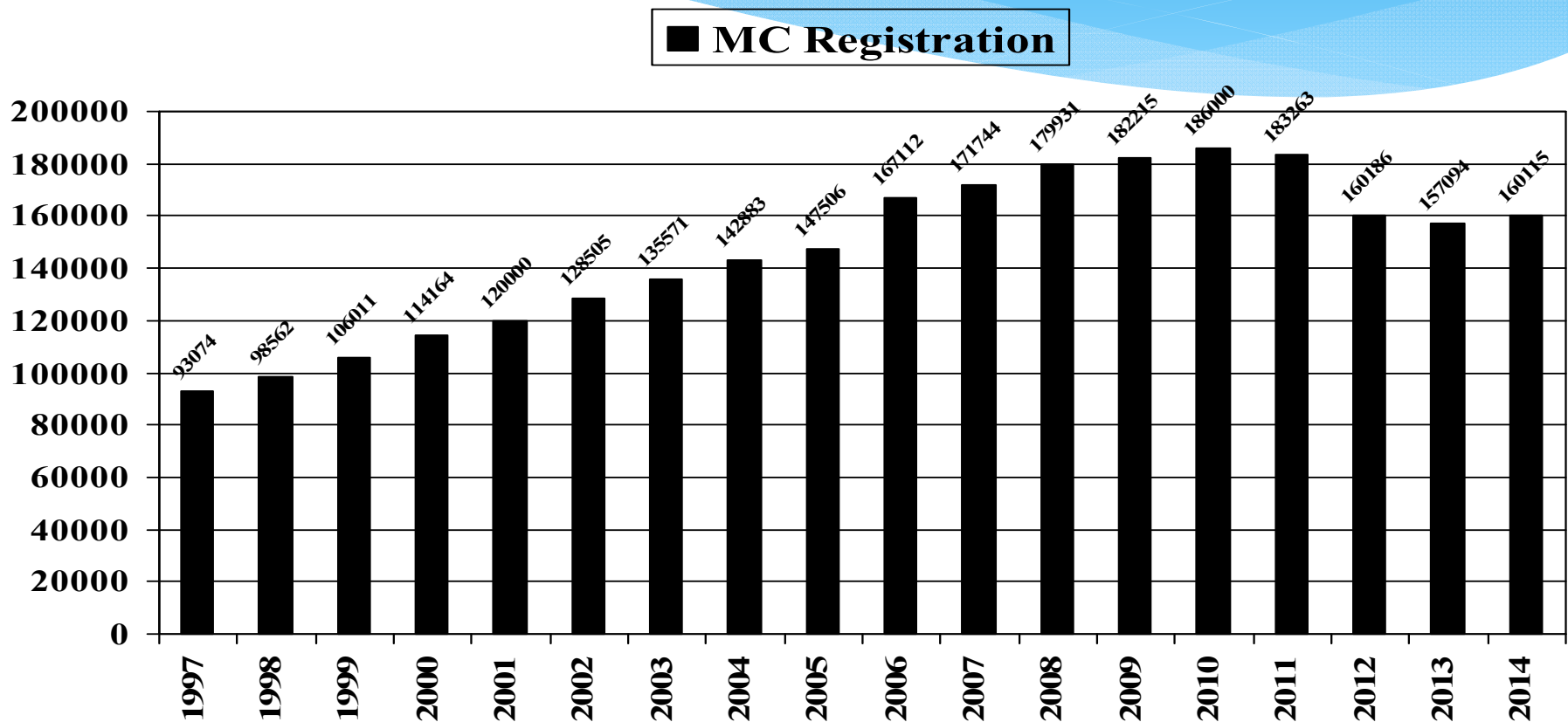


2014  
Massachusetts Rider  
Education Program  
Motorcycle Report (Draft)  
6/23/15

Gene Carabine – MA Rider Education Program  
Registry of Motor Vehicles  
Massachusetts Department of Transportation

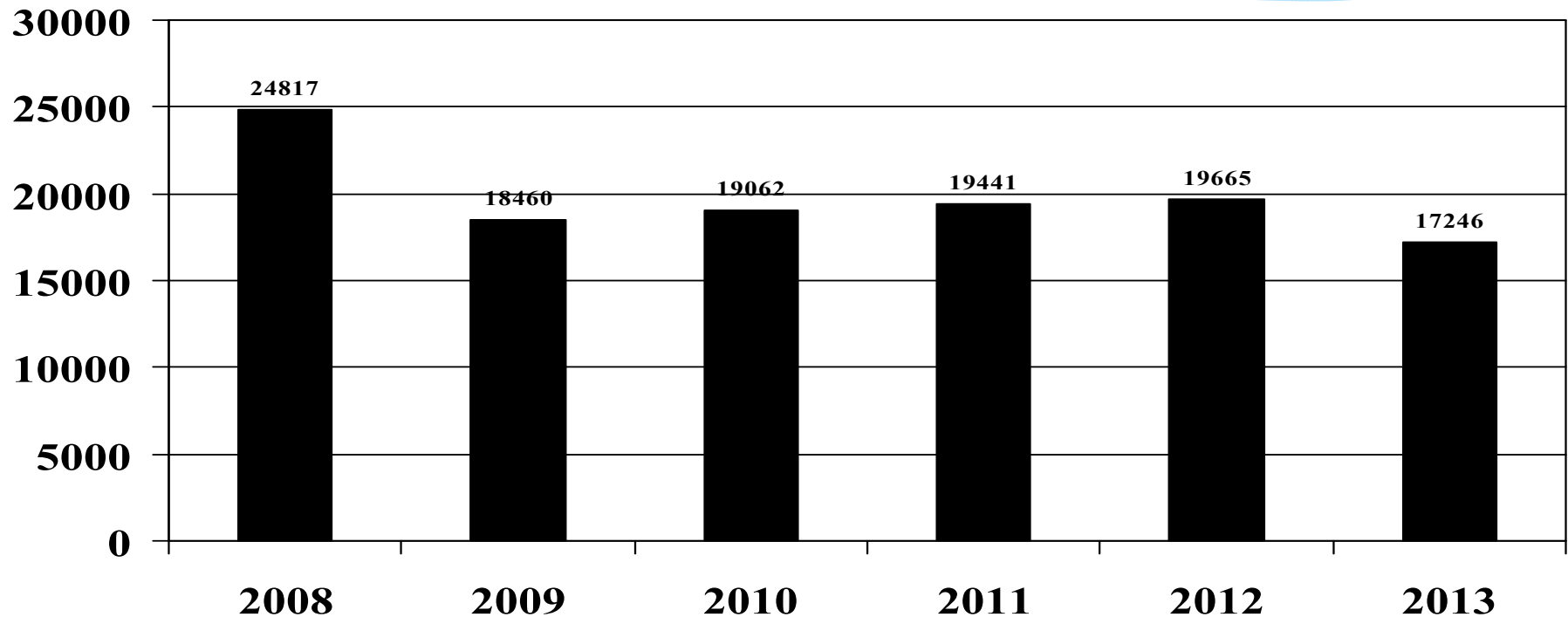
# MC Registrations by Year



16% reduction in Registrations since 2010 to 2013. 2% increase in 2014

# MC Permits by Year

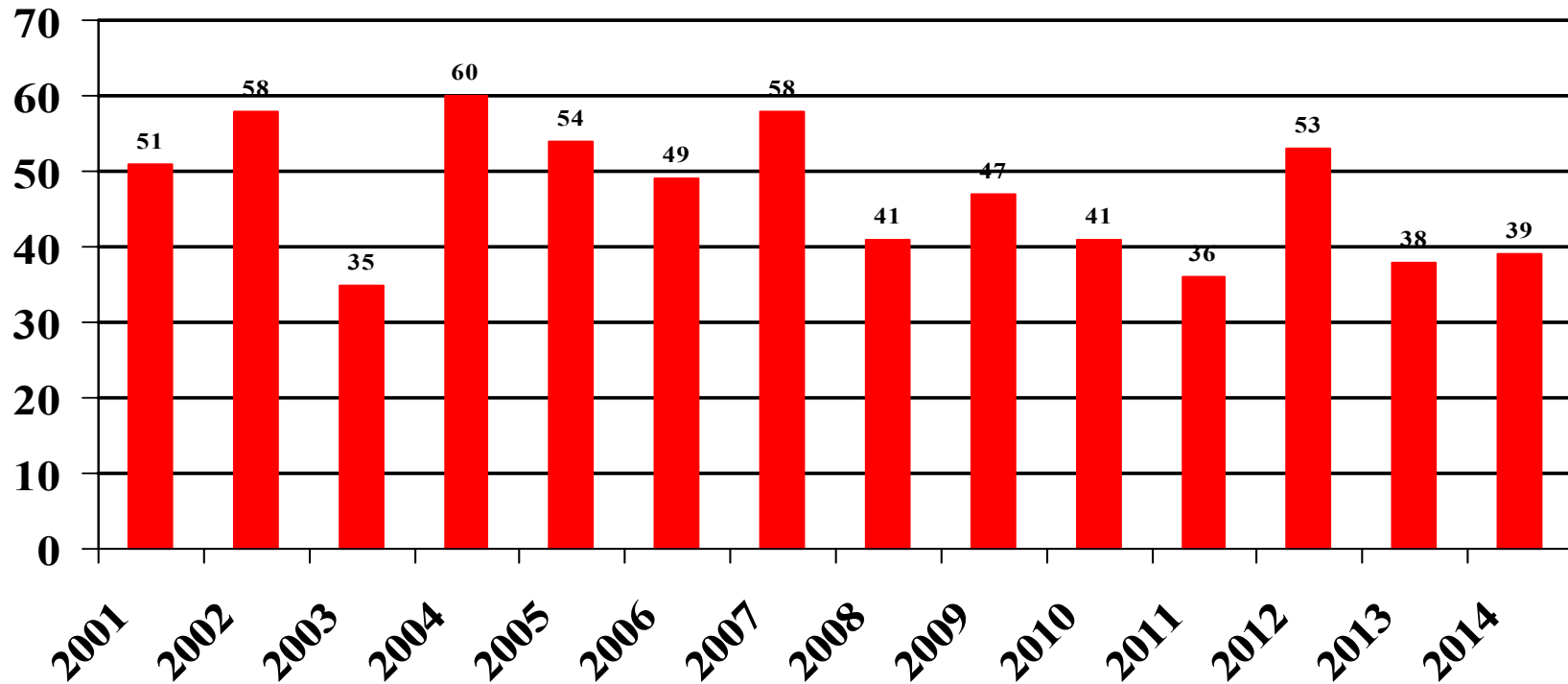
■ MC Permits



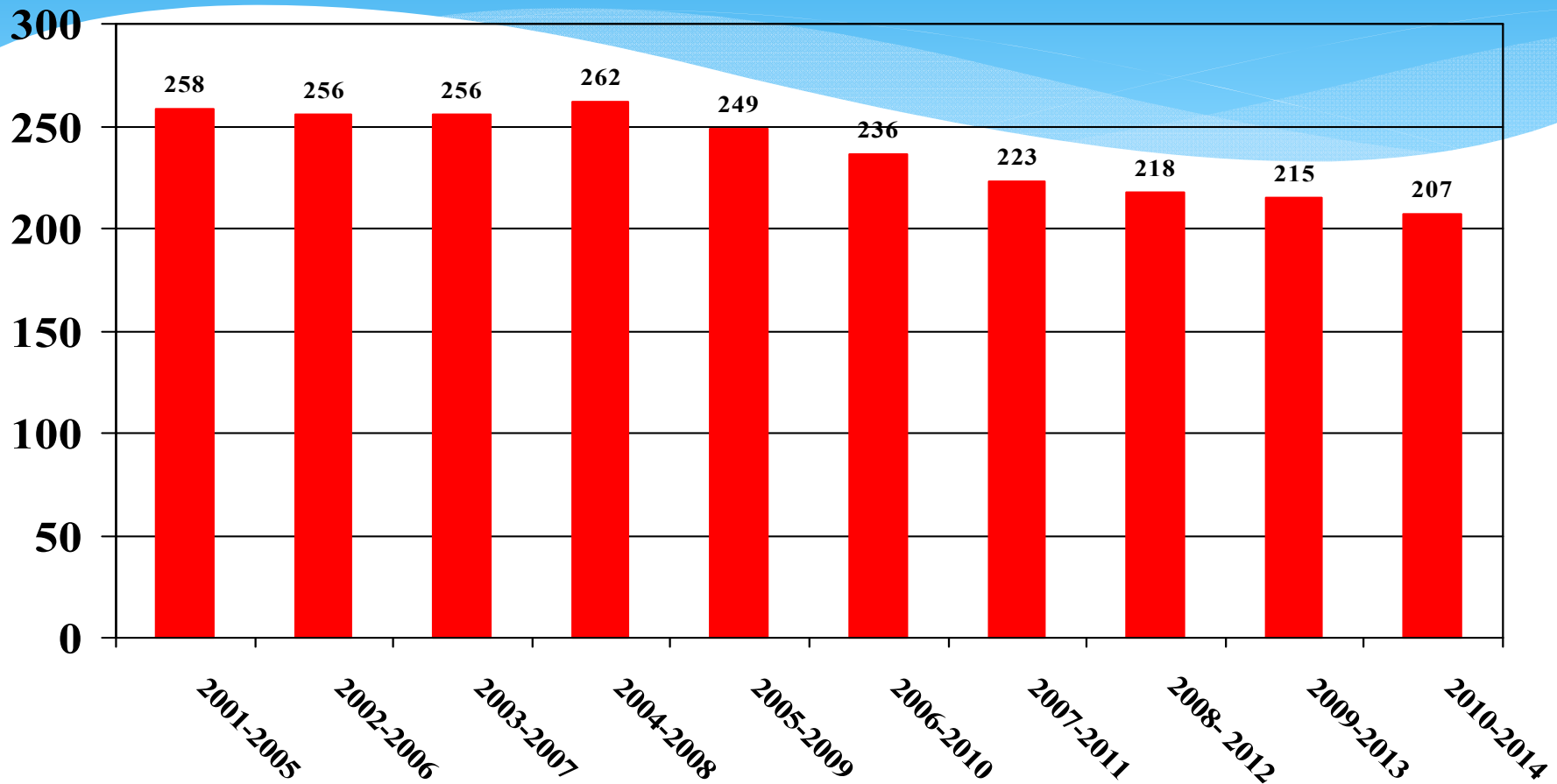
31% reduction in Permits since 2008

# MC fatalities by Year

■ MC Fatalities

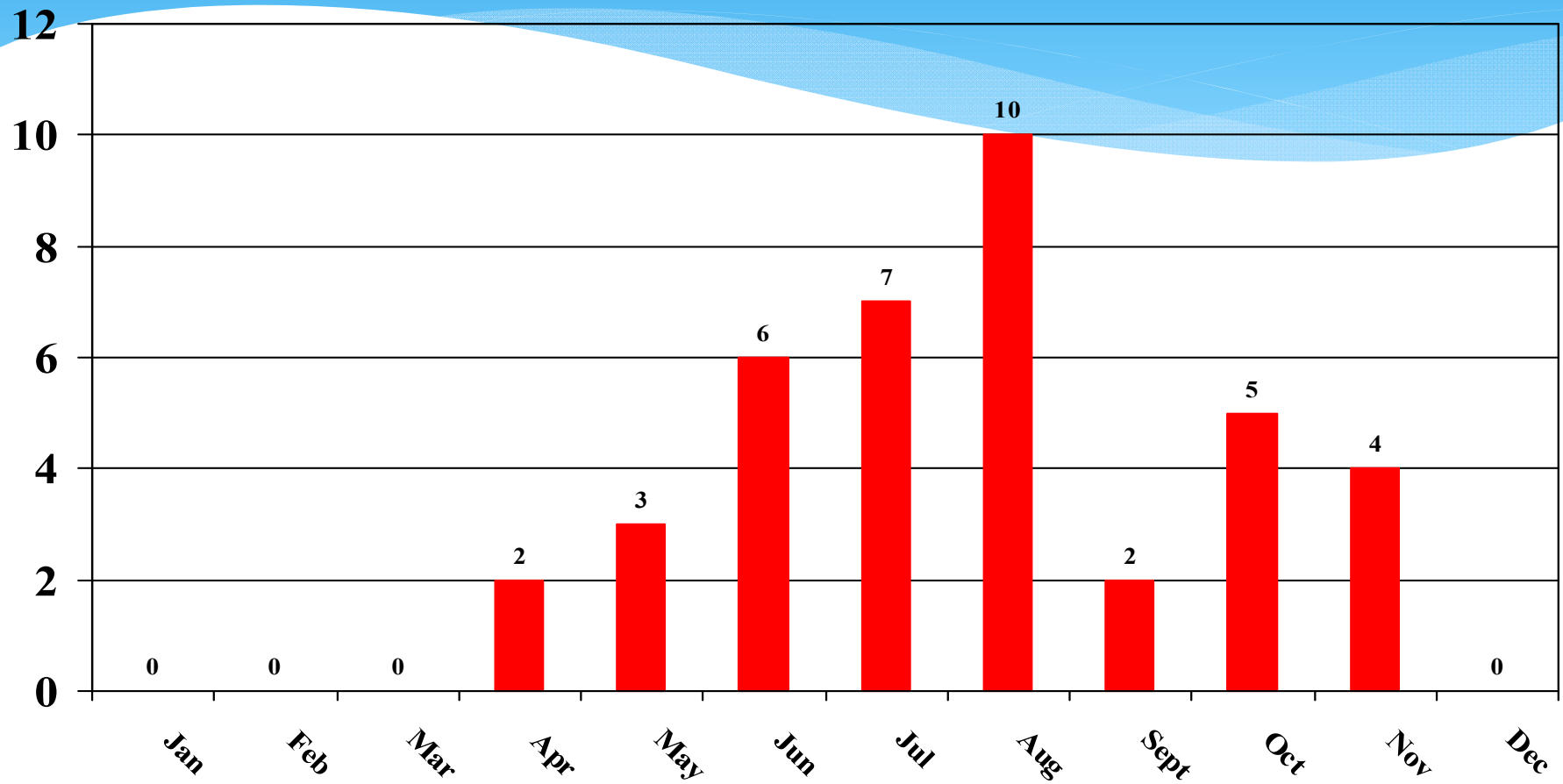


# MC fatalities in 5 year increments



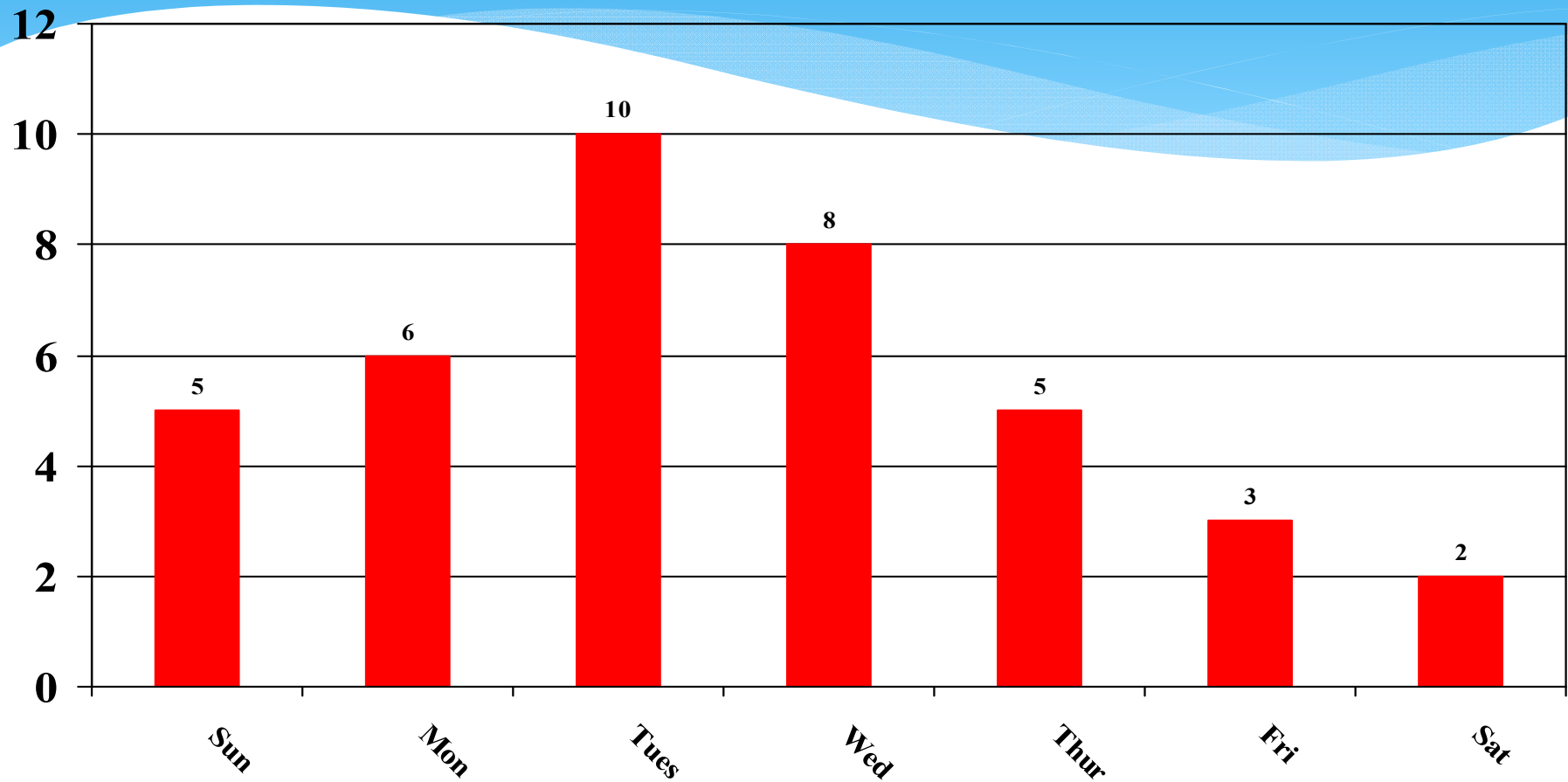
22% reduction in 5 Yr Avg fatalities rate between 2004-2008 & 2010-2014

# MC fatalities by Month



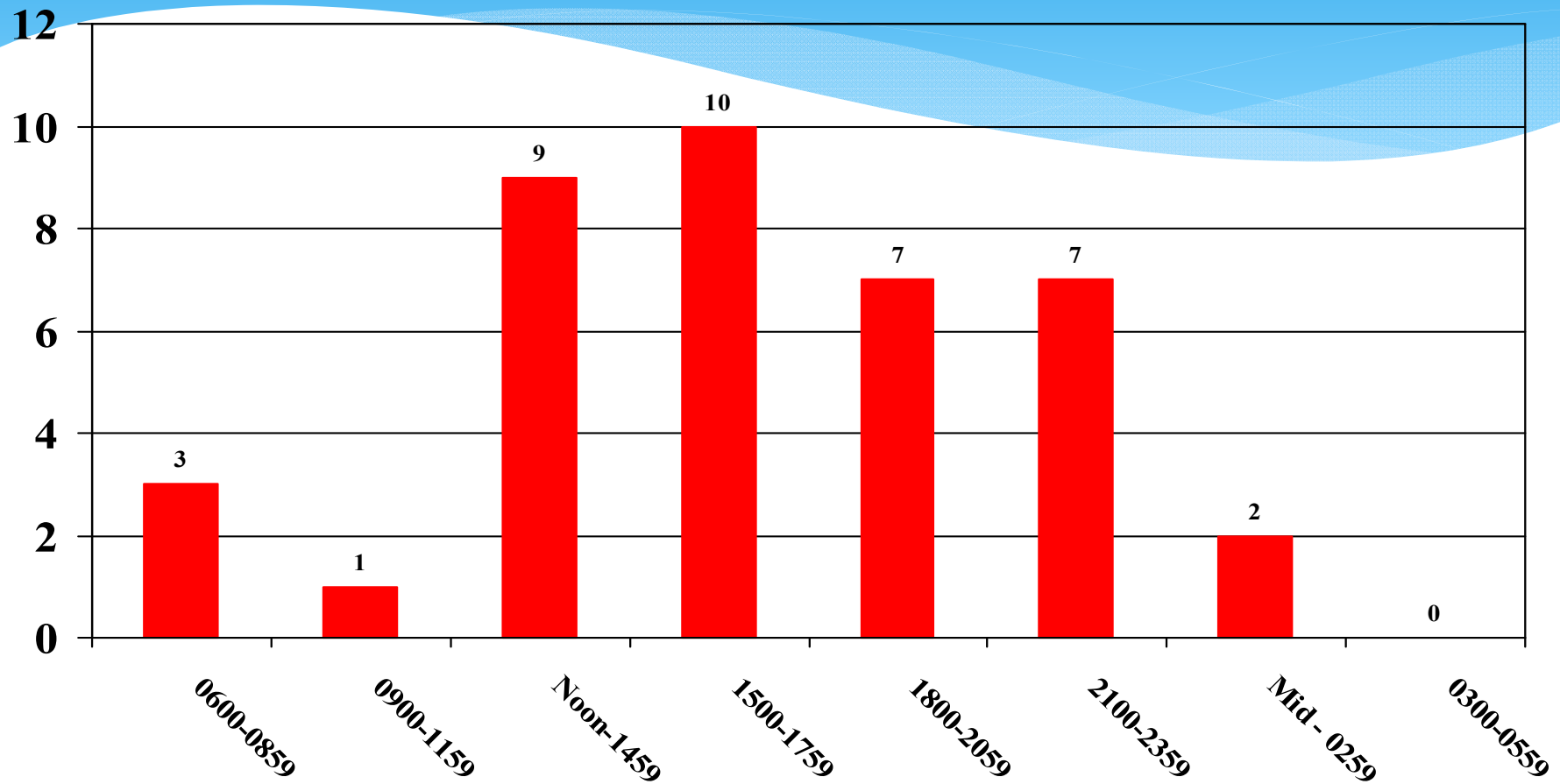
26% occurred during the month of Aug

# MC fatalities by Day



46% occurred on a Tuesday or Wednesday

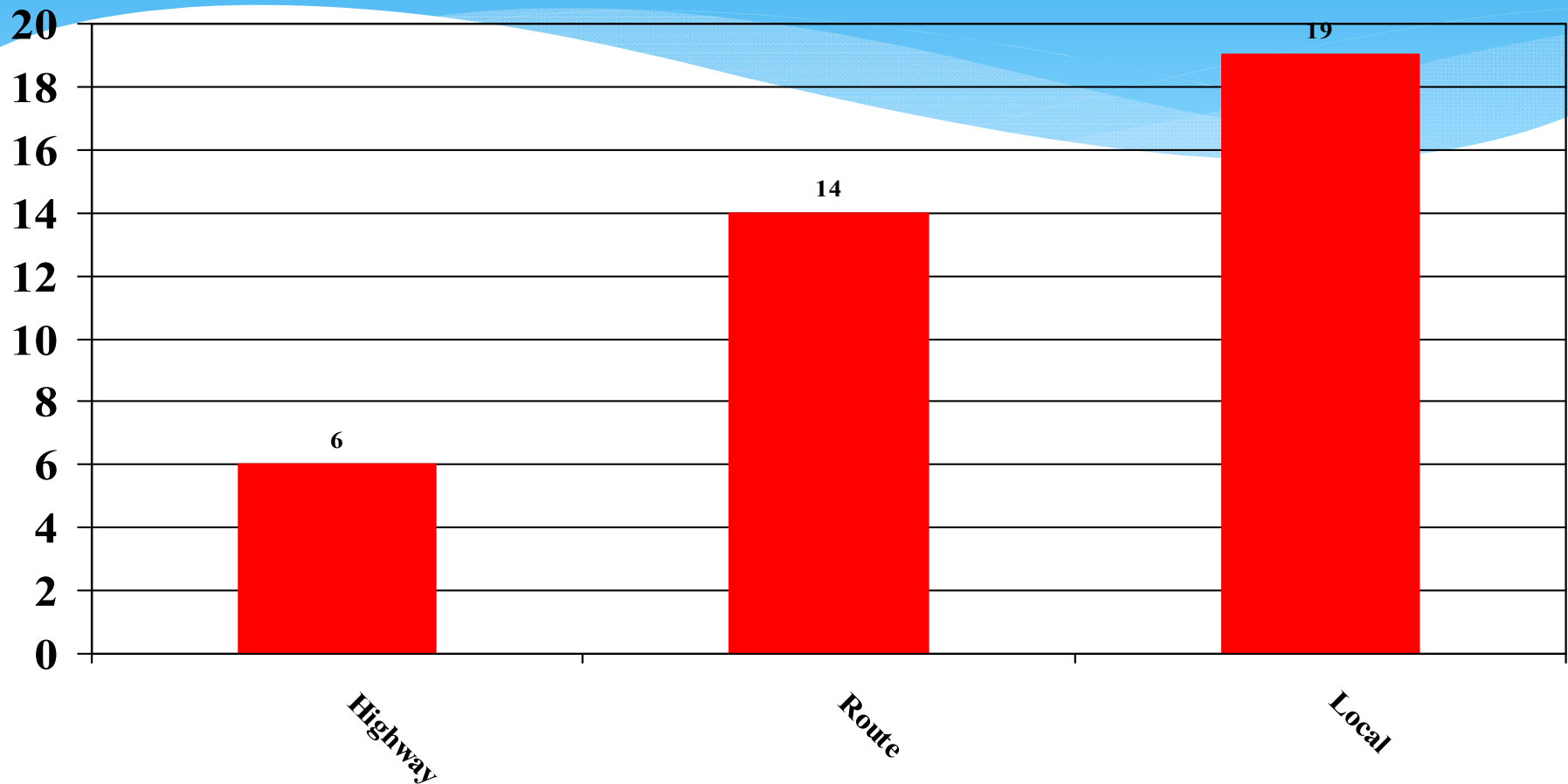
# MC fatalities by Time



49% occurred between Noon & 6pm

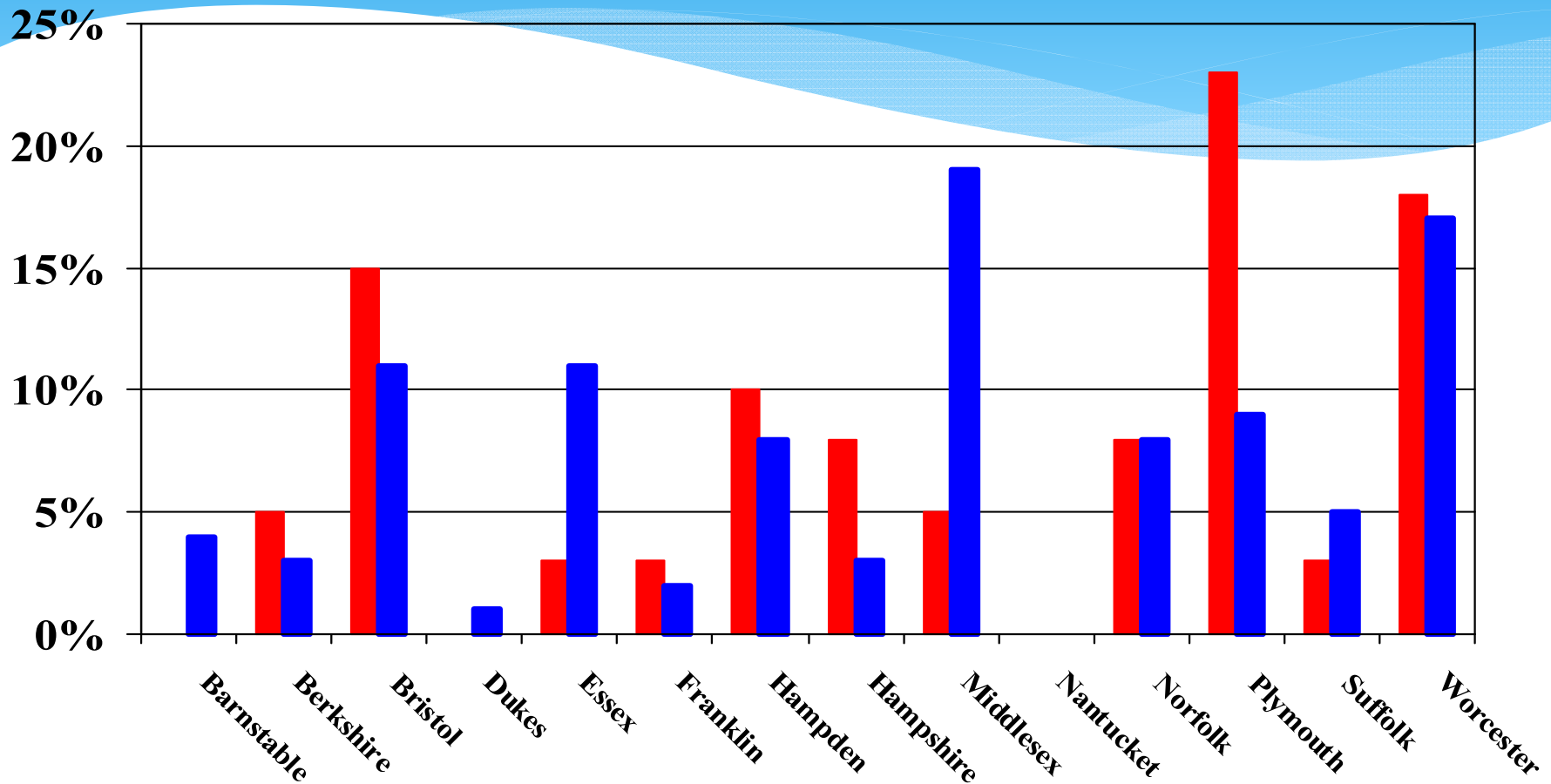


# MC fatalities by Road Type

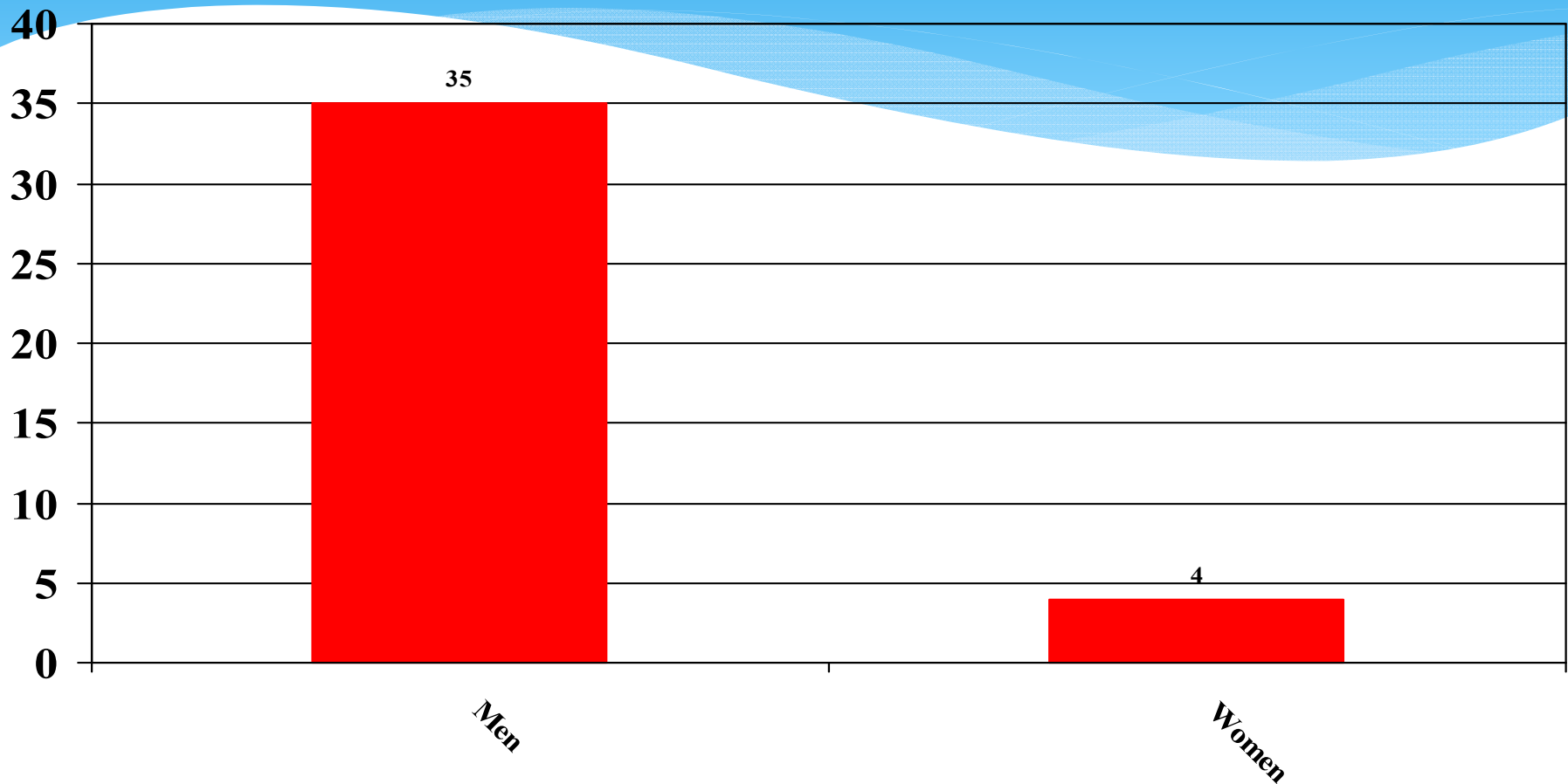


49% occurred on local roads

# Percentage of MC fatalities & MC Registrations by County

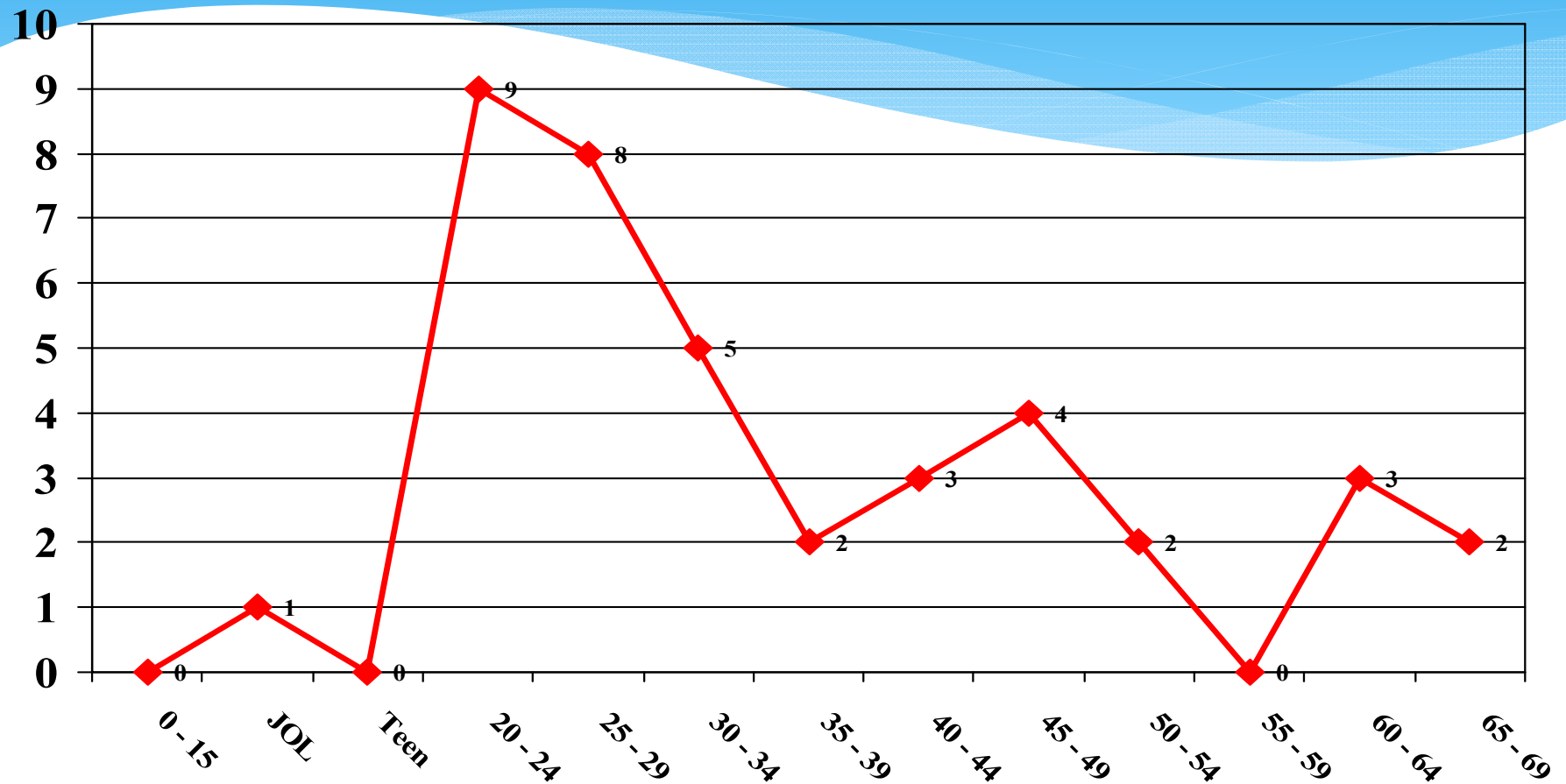


# MC fatalities by Gender



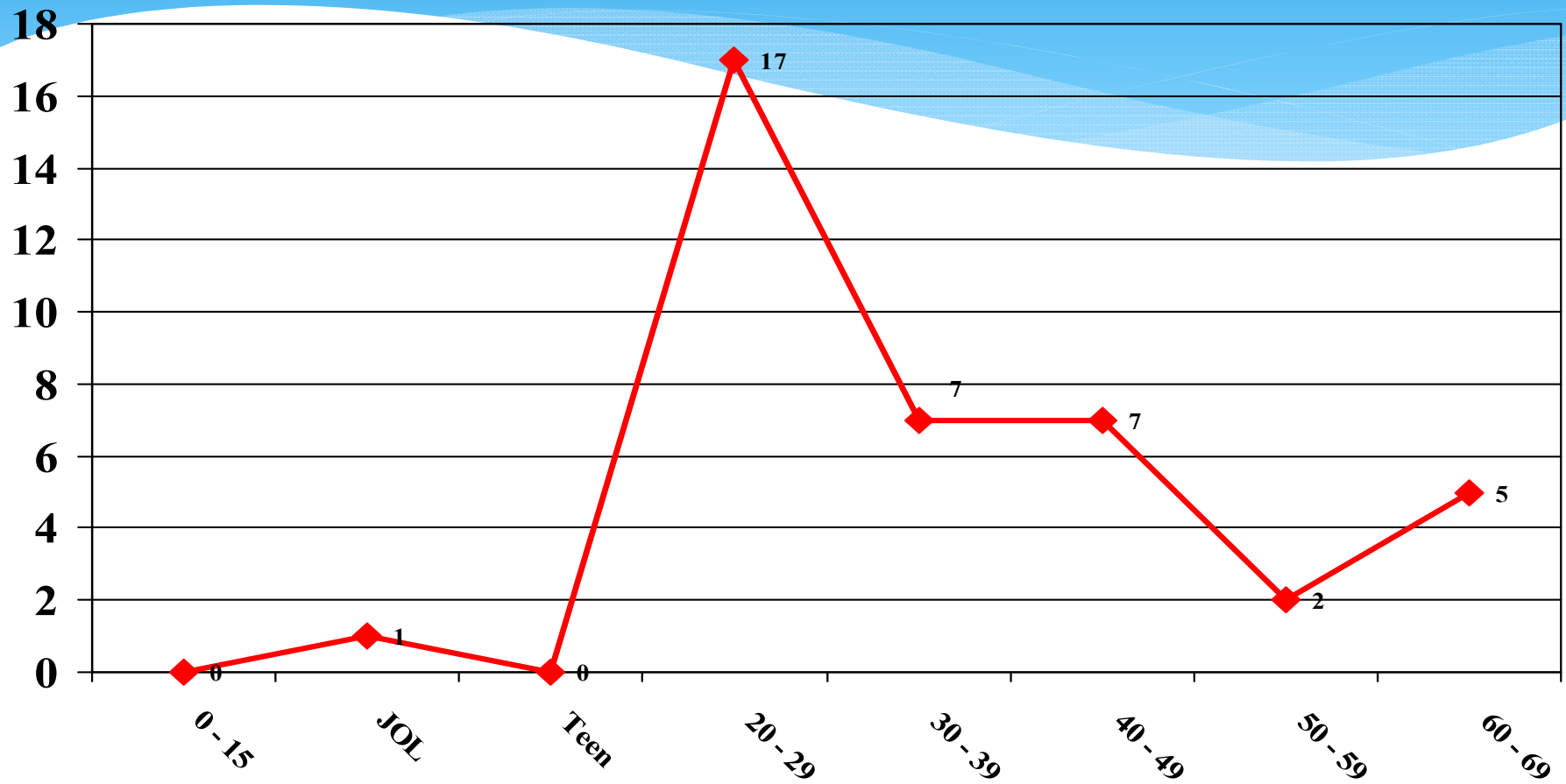
90% of all motorcycle fatalities were Men

# MC fatalities by Age (5 Yr Breakdown)



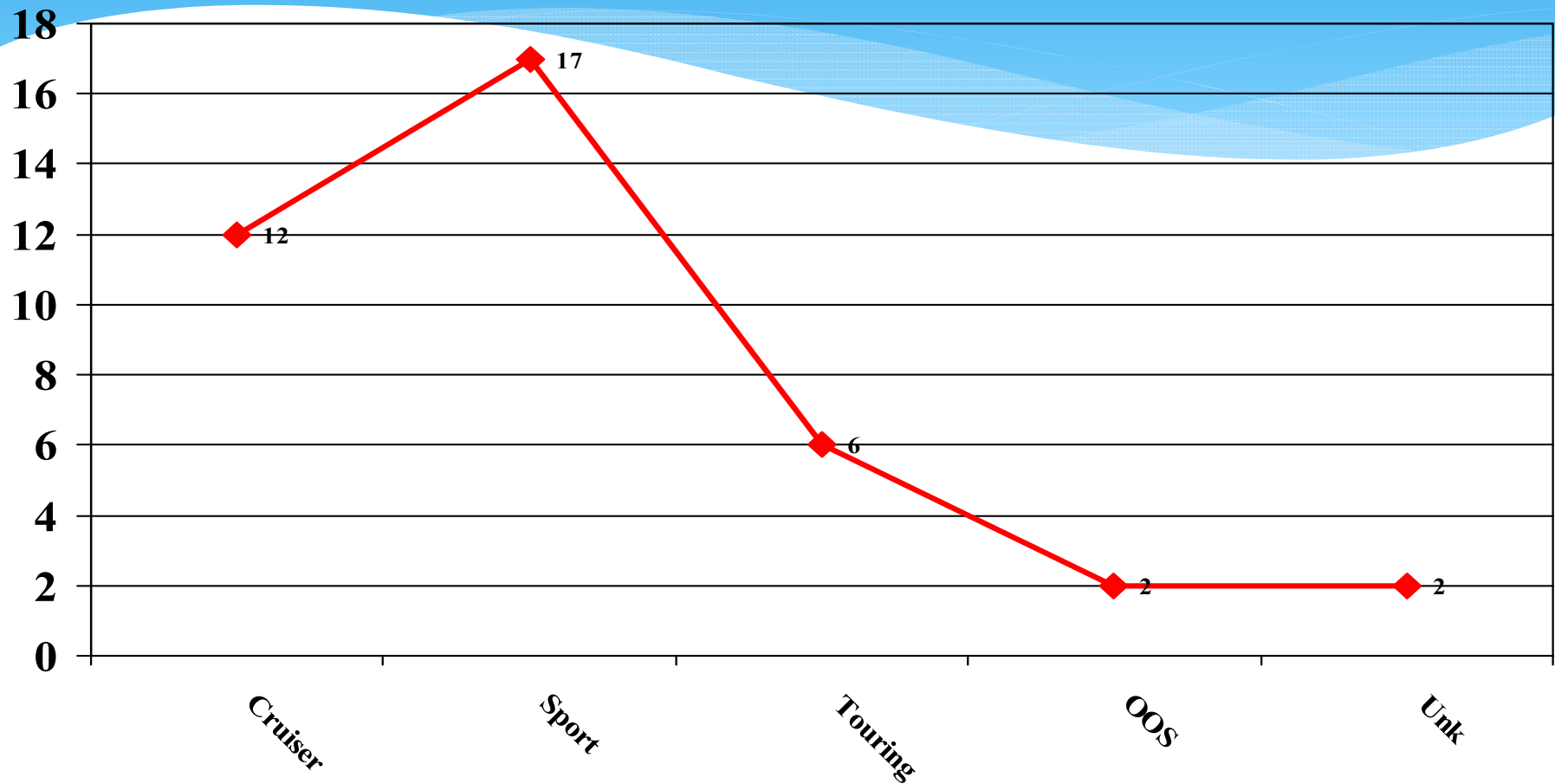
23% were between the age of 20 & 24

# MC fatalities by Age (10 Yr Breakdown)



44% were between the age of 20 through 29

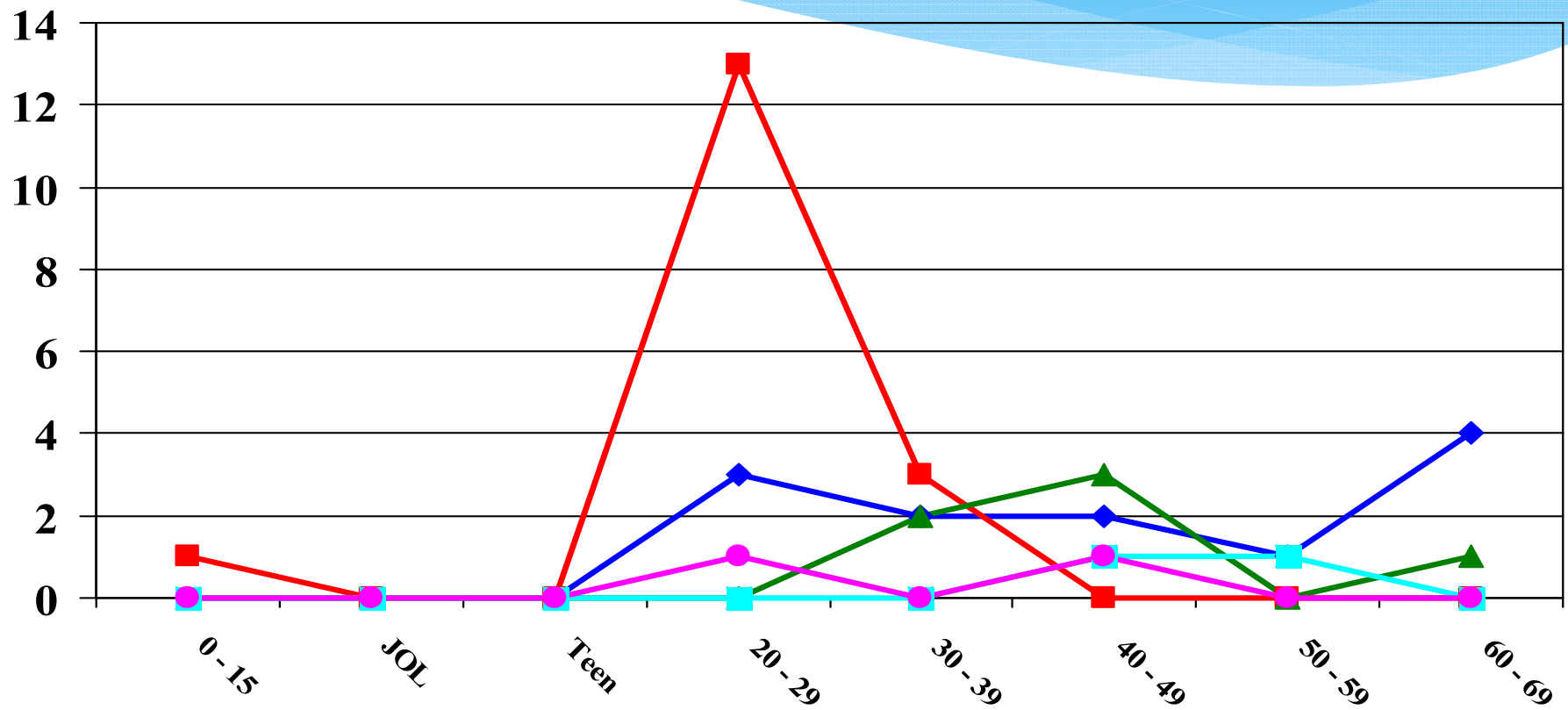
# MC fatalities by MC Type



44% were on a Sport Bike

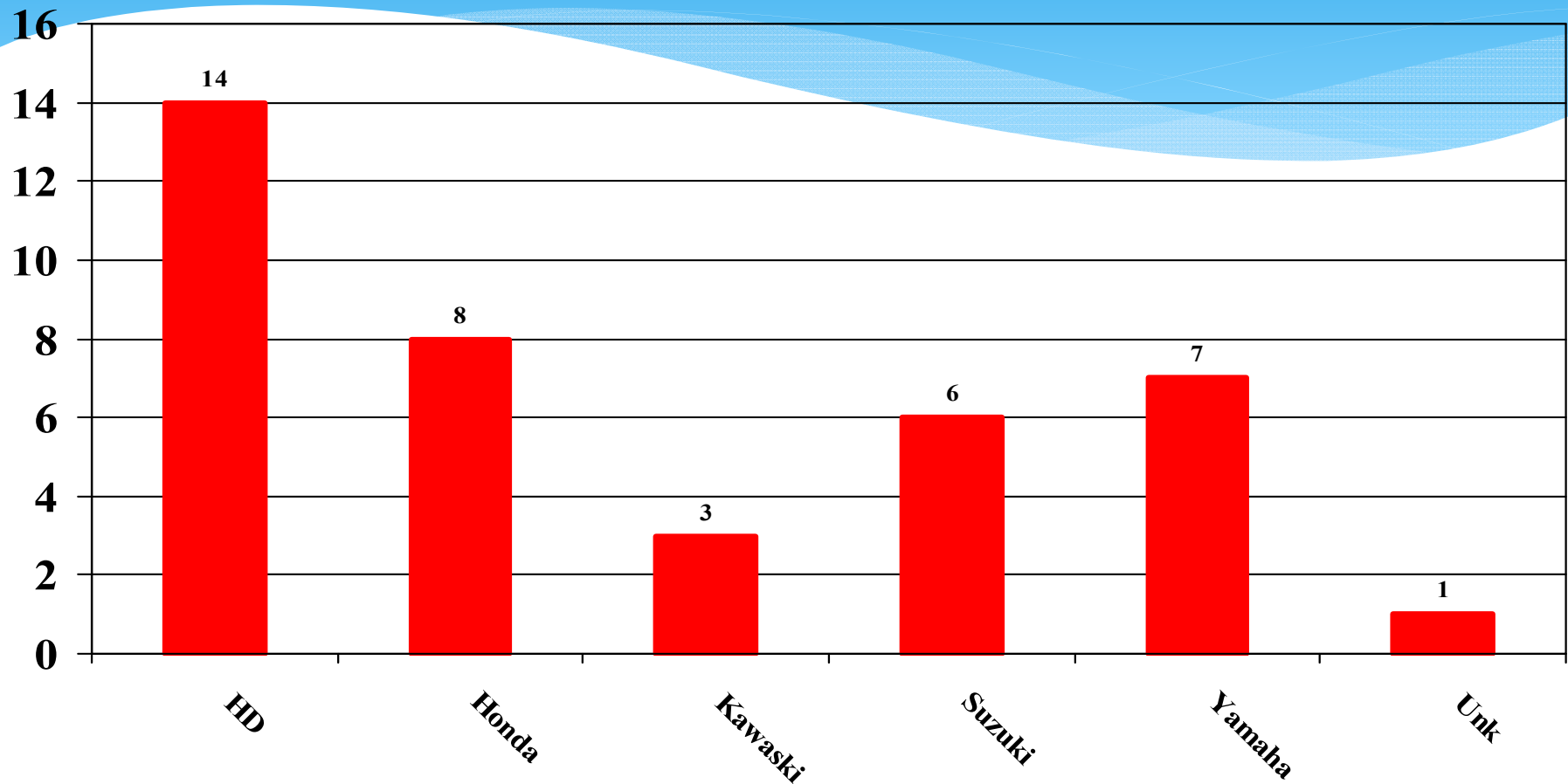
# MC fatalities by MC Type & Age

◆ Cruiser ■ Sport ▲ Touring ■ OOS ● Unk



20 – 29 year olds on Sport Bikes

# MC fatalities by Make

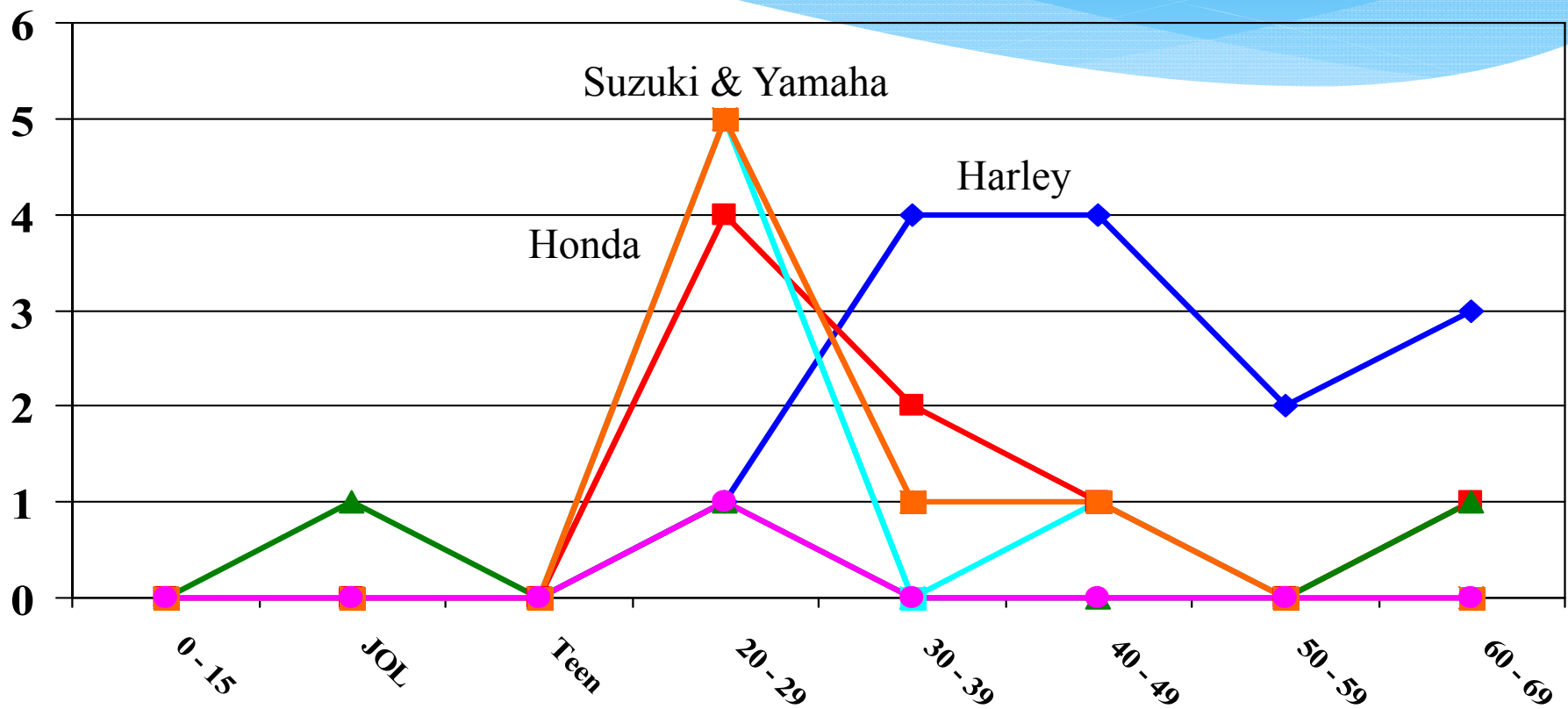


36% were riding a Harley Davidson

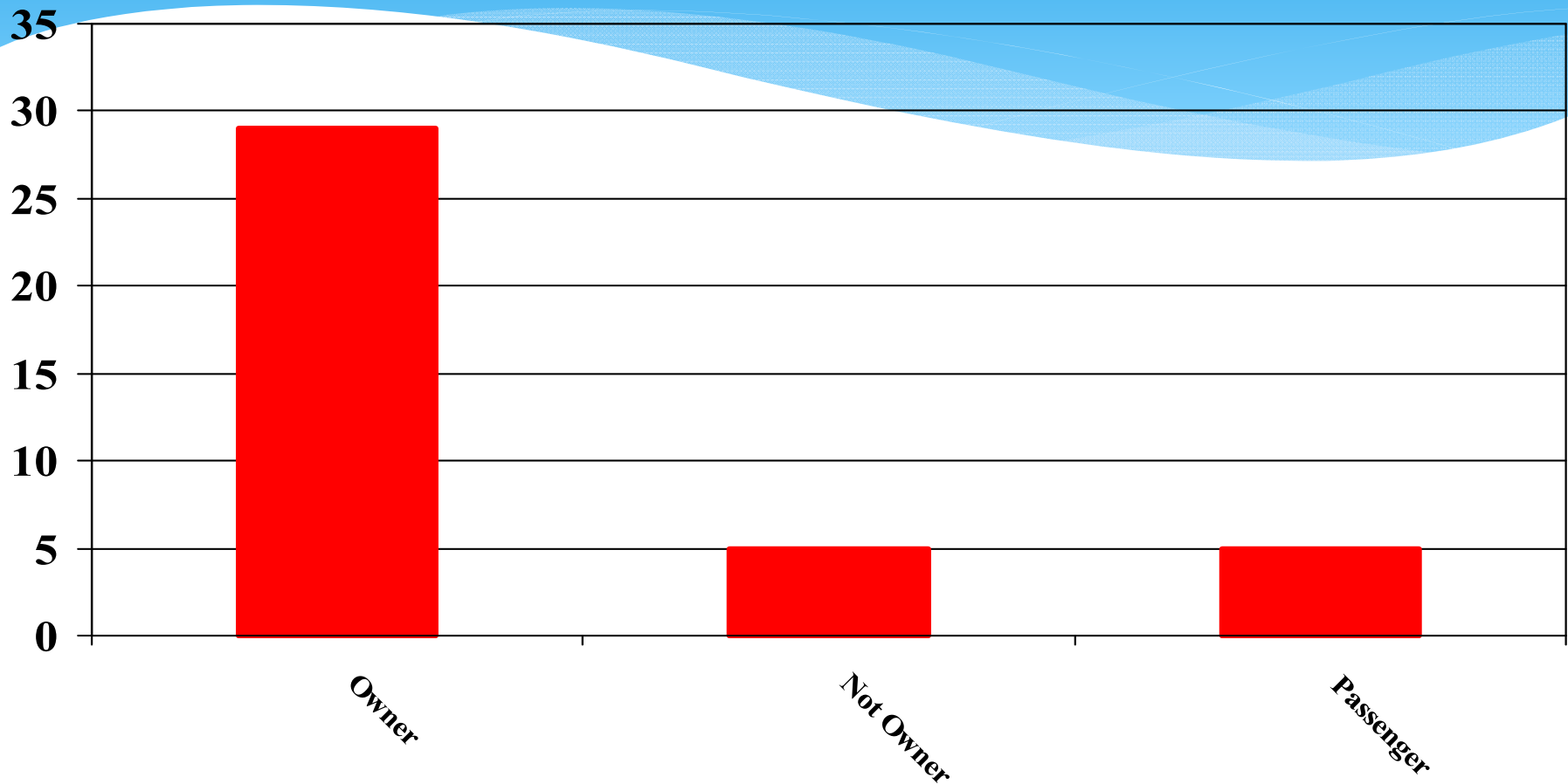


# MC fatalities by MC & Age

◆ Harley ■ Honda ▲ Kawasaki ■ Suzuki ■ Yamaha ● Unk

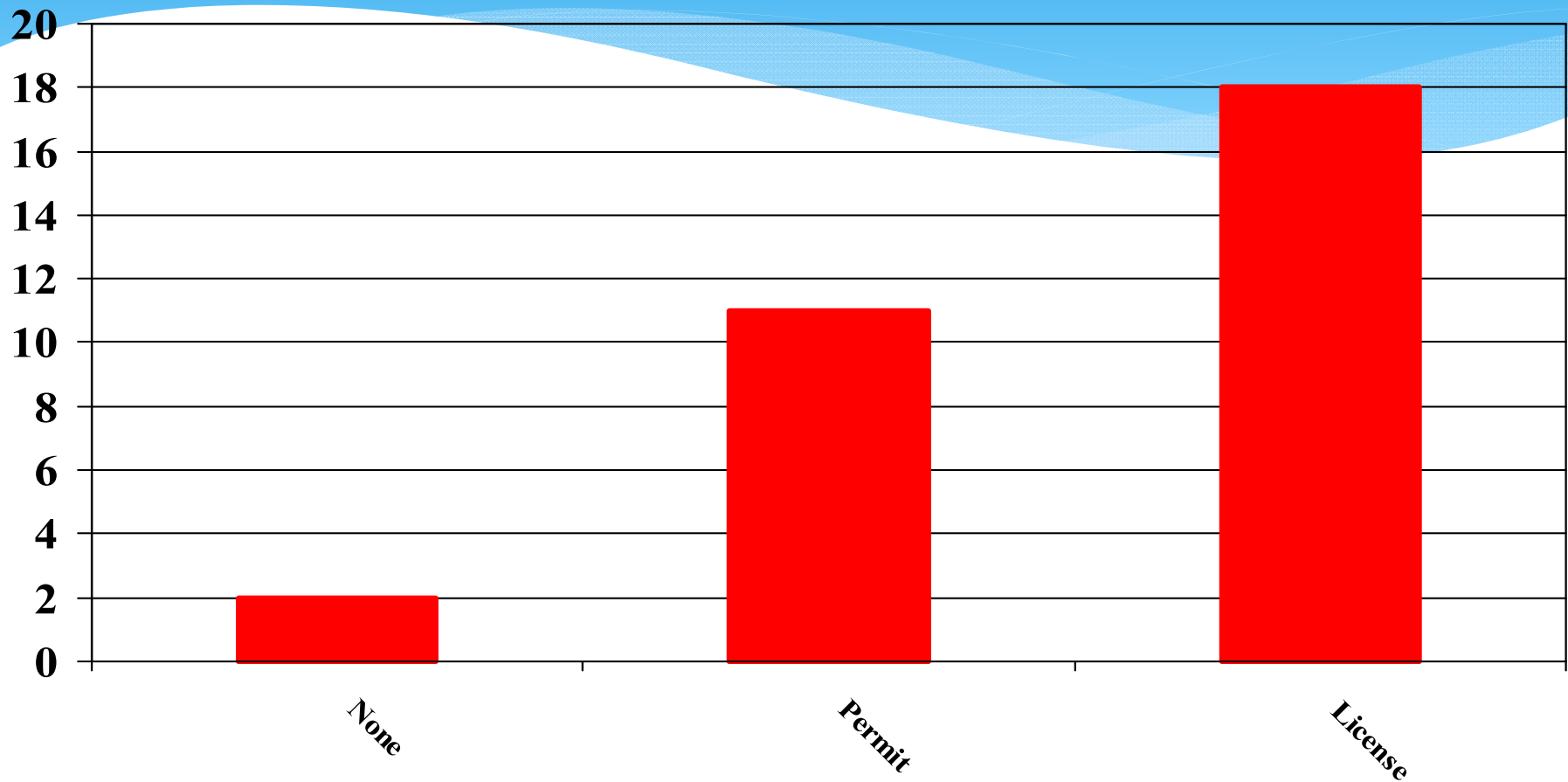


# MC fatalities by Ownership



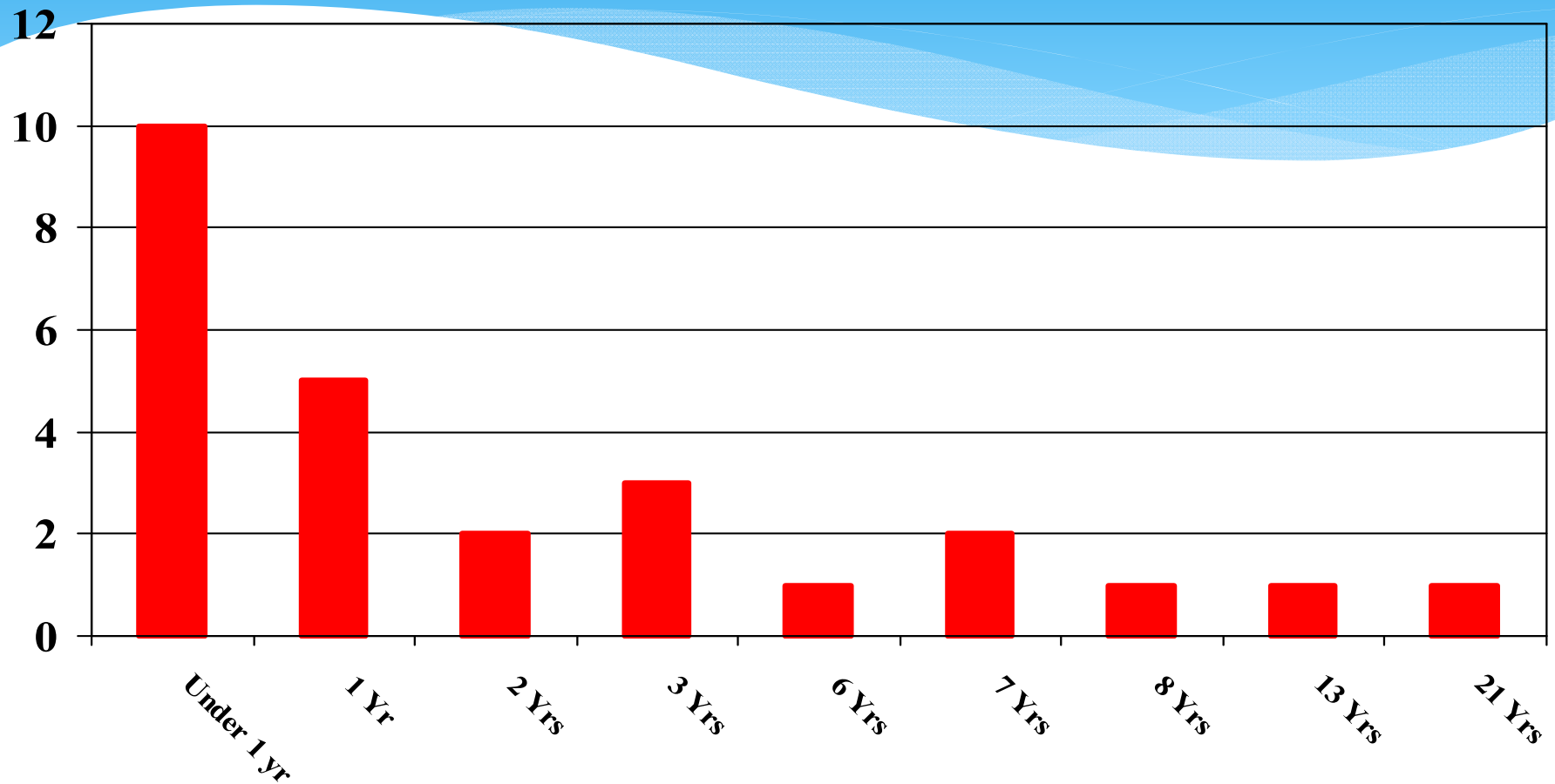
13% did not own the motorcycle they were killed on

# MC fatalities by License



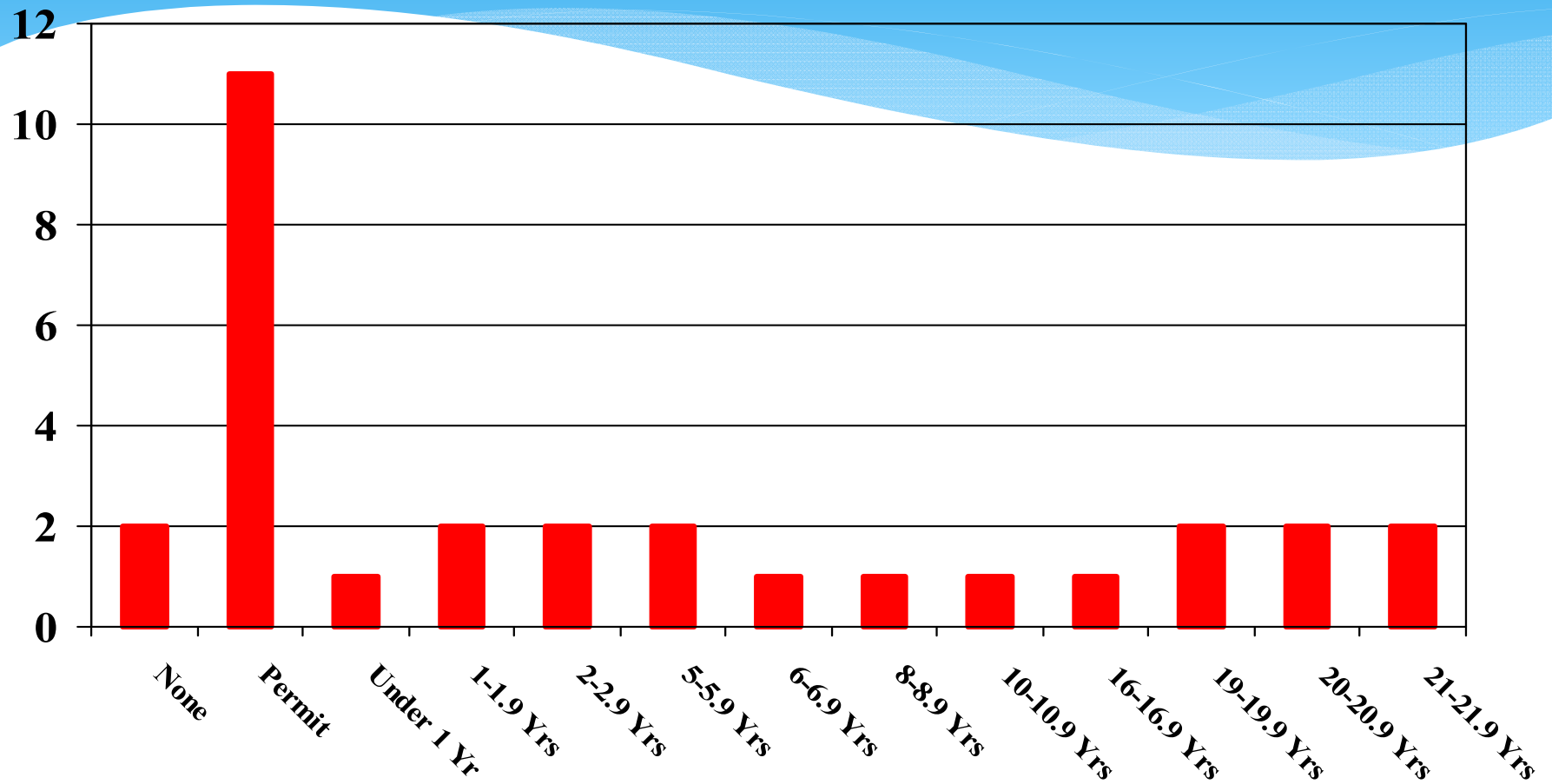
58% had a motorcycle endorsement

# MC fatalities by Ownership & Time

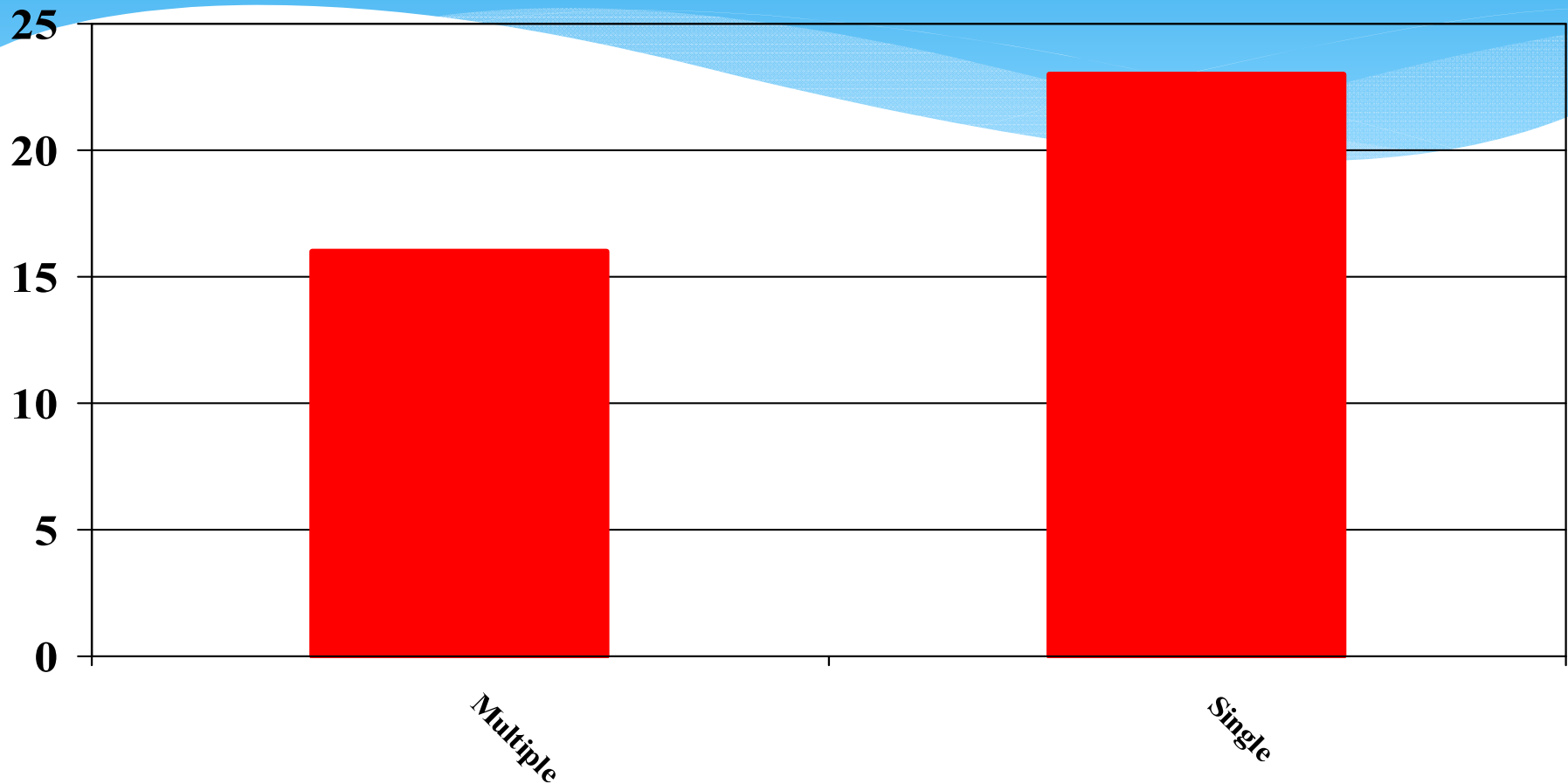


38% owned their motorcycle less than one year

# MC fatalities by License / Permit

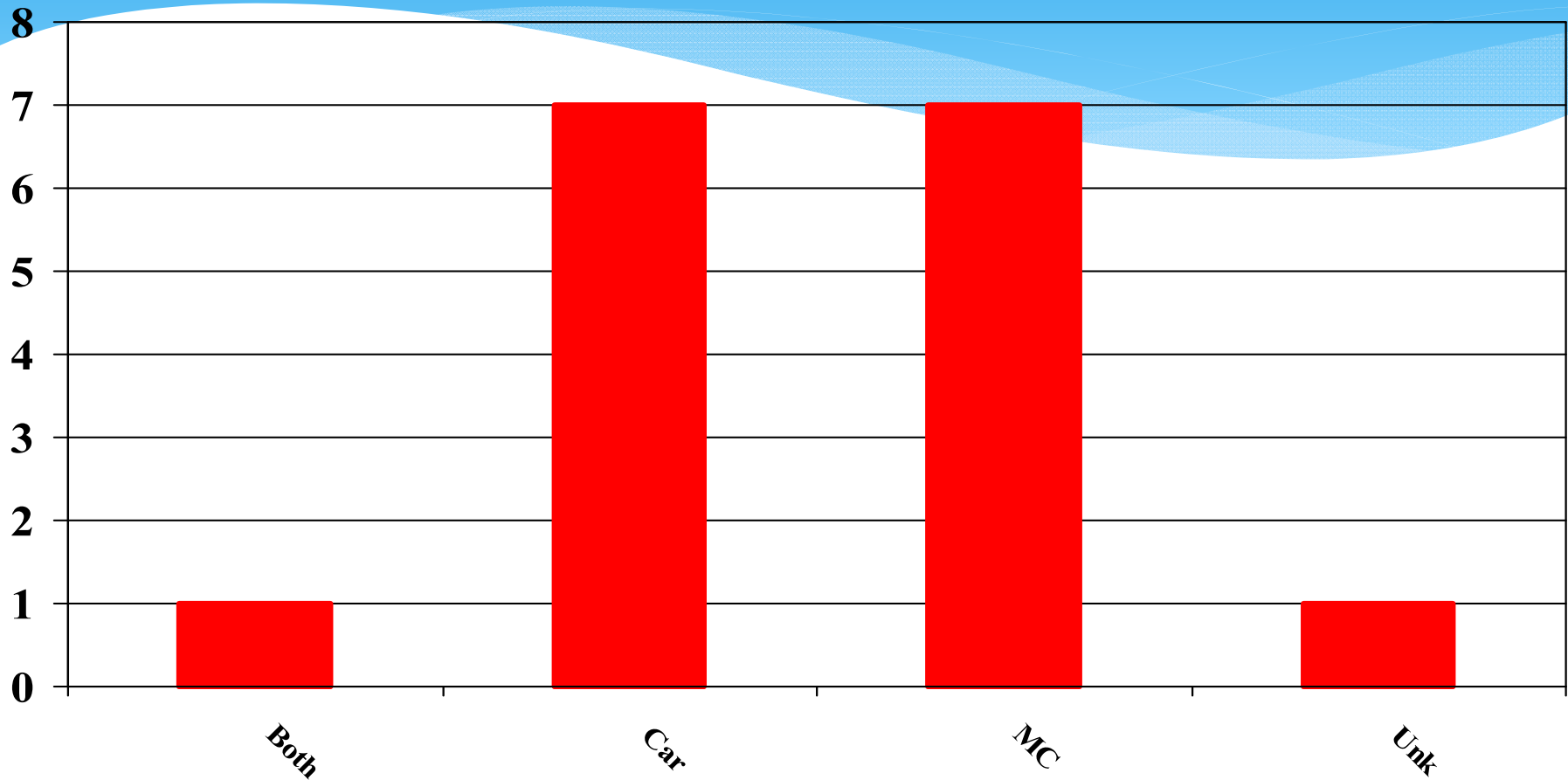


# MC fatalities by Multiple or Single Vehicle Crash

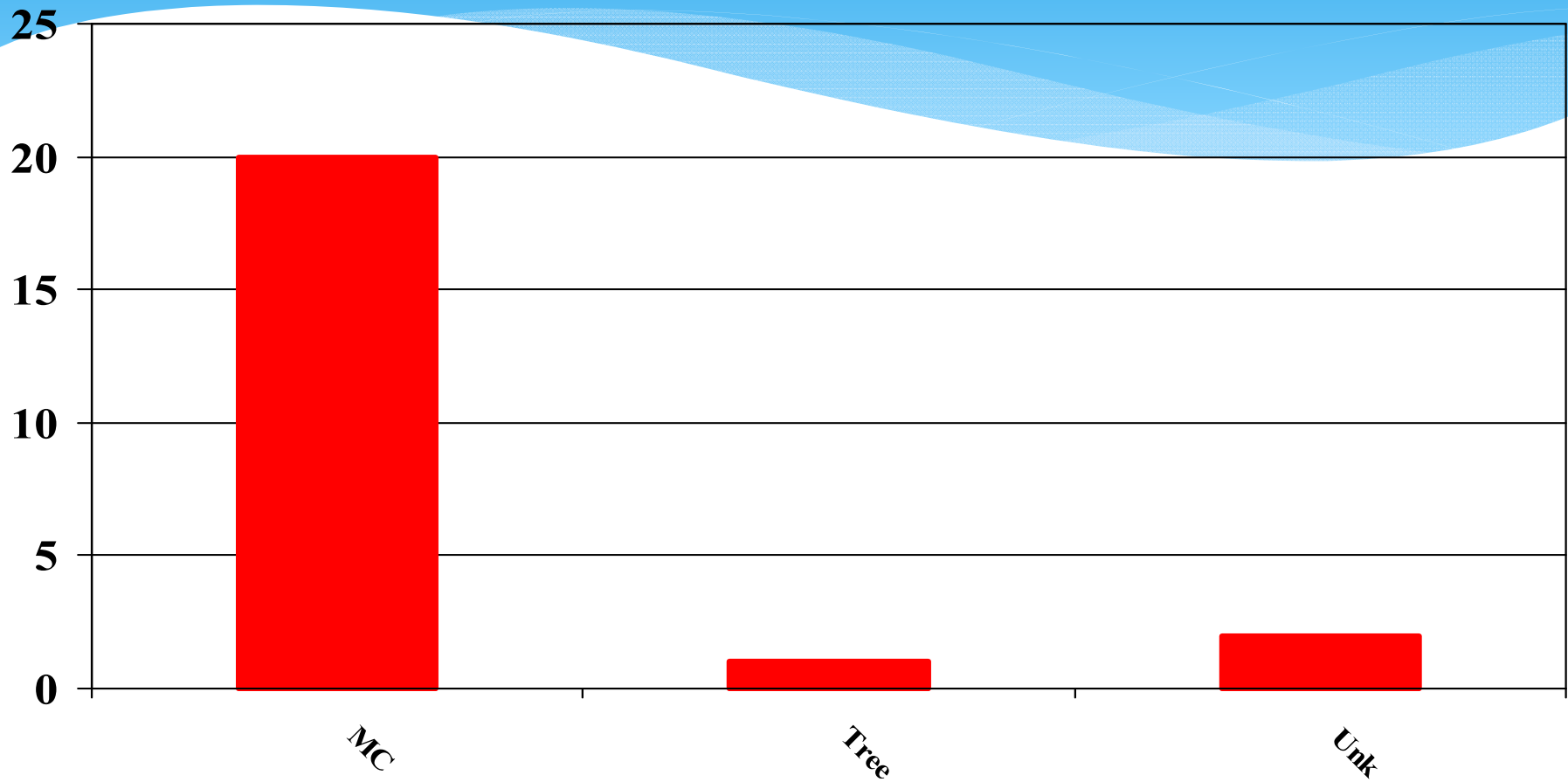


59% were Single Vehicle Crashes

# Multiple Vehicle Crash by Fault

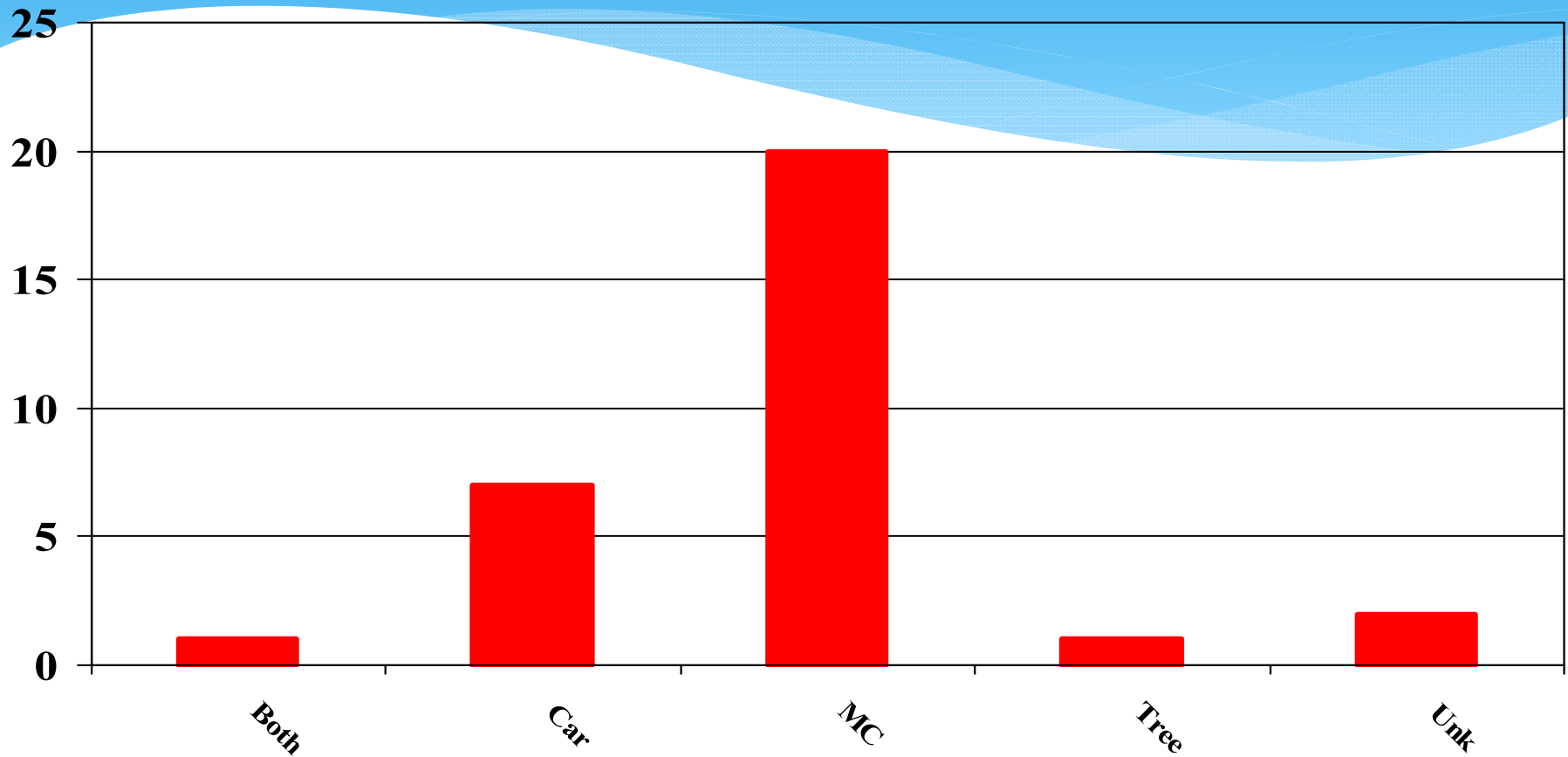


# Single Vehicle Crash by Fault



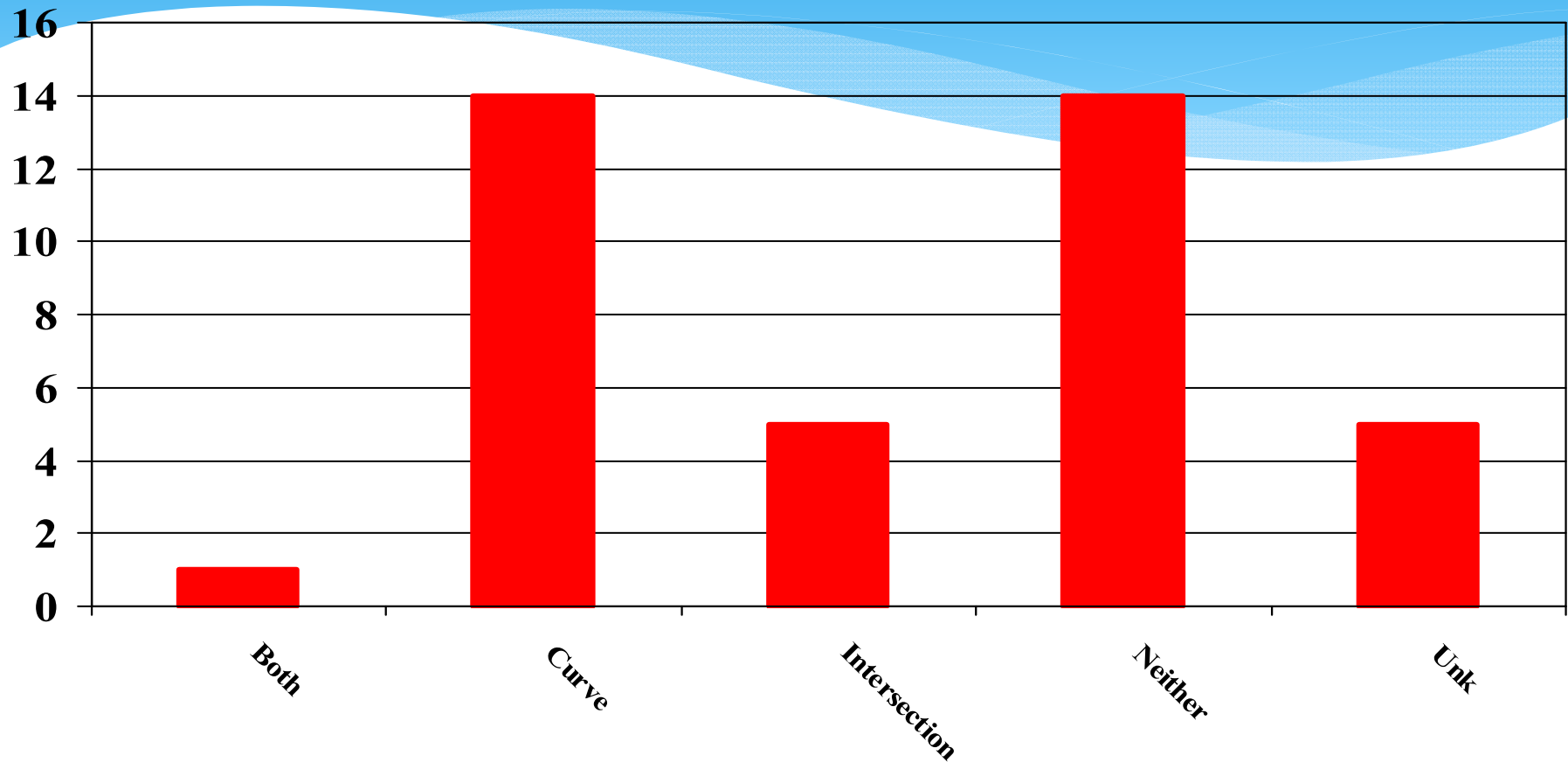


# Total by Fault



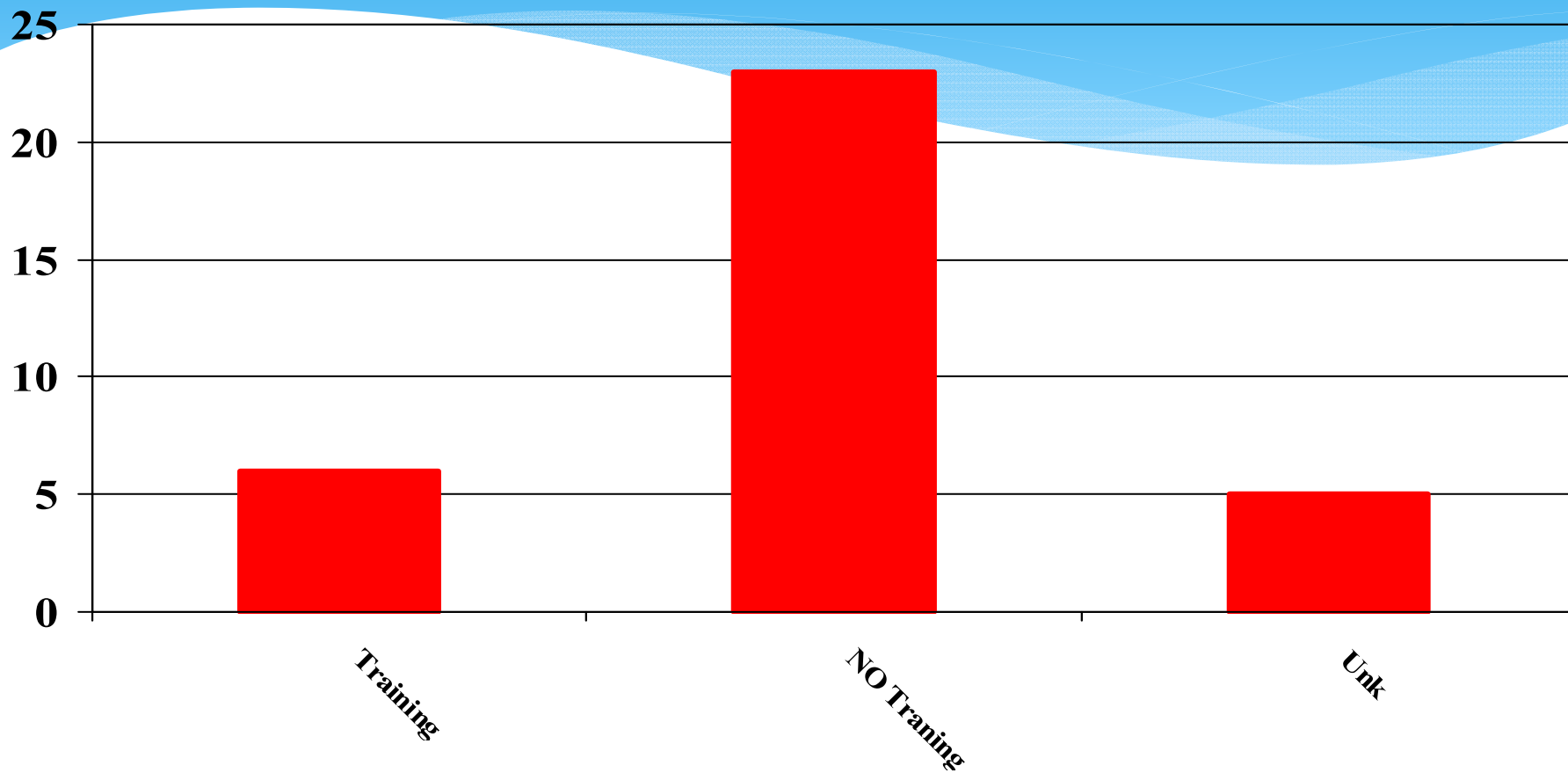
69% was the fault of the Rider

# Fatalities in a Curve or Intersection



36% in a Curve & 13% at an Intersection or Driveway

# Training



68% had no formal training